

KAMARAJAR PORT, TAMIL NADU

Background

Kamarajar Port (erstwhile Ennore port) is located on the Coromandel Coast in Tamil Nadu state, about 24 km north of Chennai Port.. The Port was commissioned in June, 2001 with two dedicated coal berths for handling of coal for the thermal power stations of Tamil Nadu Electricity Board (TNEB). The Port has developed terminals through private sector participation to handle liquids, coal and iron ore.

Studies Conducted

- Geometrically similar physical model on a scale of 1:120 (G.S.) to simulate random sea waves from South - East direction.
- Harbour development for LNG, VLCC berth for ships of 250,000 DWT.
- Assessment of Wave tranquility in Kamarajar Port using numerical model MIKE 21 SW and BW.
- Shoreline evolution due to development of the port.
- Ship manoeuvring studies to optimize the approach channel.
- Ship mooring studies.



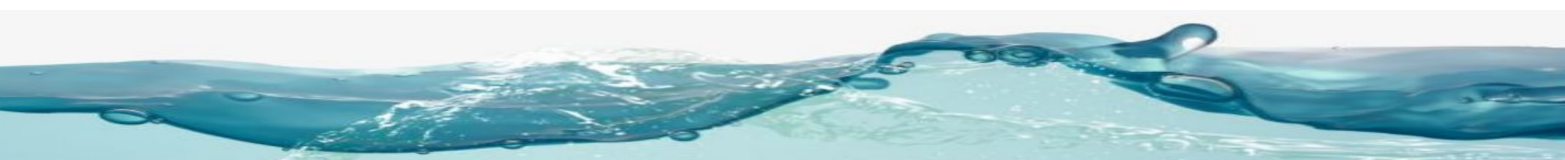
Satellite Image of Kamarajar Port

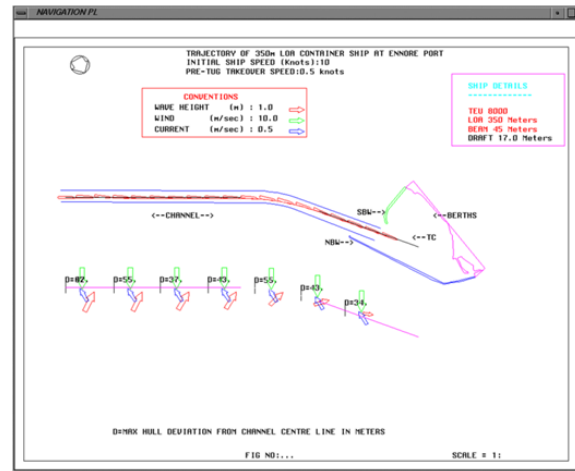
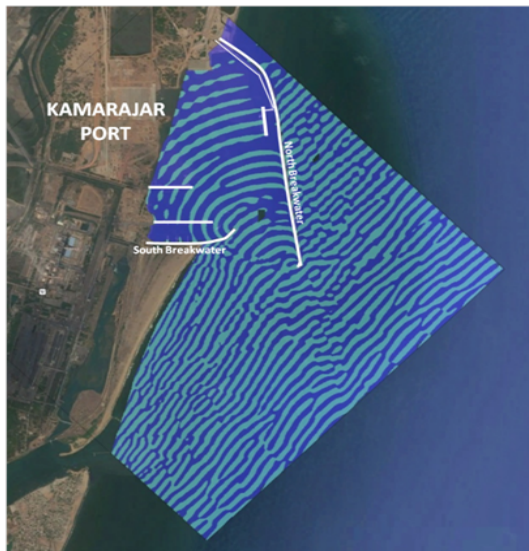
Outcome and Benefits

- Tranquility aspects at various berths and for phase wise development of port
- Navigation, Ship motions and mooring aspects of ships at berth.
- Disposal of dredged material and impact on coastal erosion
- Maintenance of breakwaters



Physical Model : Wave Propagation





Numerical Model : Ship Manoeuvring

Numerical Model : Wave Propagation

